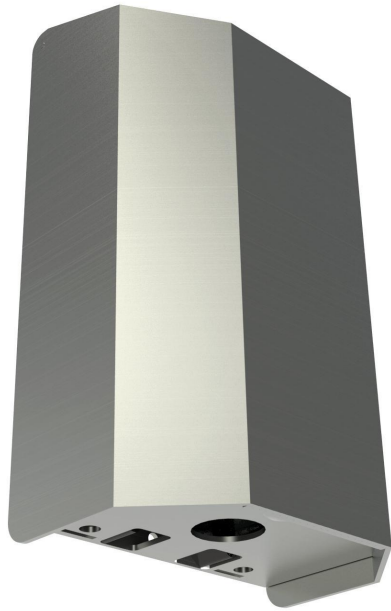




AA-SDS-AF: Auto Soap Dispenser / Hand Sanitizer



Features:

- Automatic Foaming Soap Dispenser or Hand Sanitizer
- Sloped Lid Style Prevents use as a Shelf
- Vandal Resistant
- Made in USA
- Hidden Secure Cylinder Lock
- Protects Expensive Soap Supplies from Theft
- Surface Mounted
- Corrosion Resistant
- 20 year Warranty against Vandalism available (12 gauge)

Specifications:

- Width: 6-3/4"
- Height: 11 3/8"
- Depth: 4-1/2"

Material Options:

- 12-gauge 304L Stainless Steel
- 12-gauge 316L Stainless Steel

Model Names:

- AA-SDS-AF-304L-12g
- AA-SDS-AF-316L-12g

Finish: Stainless Steel Satin # 4 Finish

Mounting: 3/8" Mounting Hole Placements

Capacity:

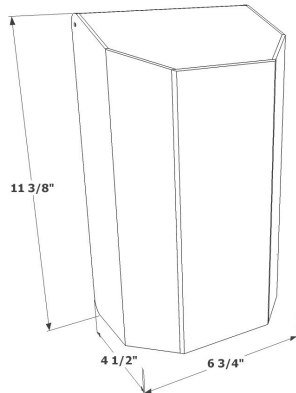
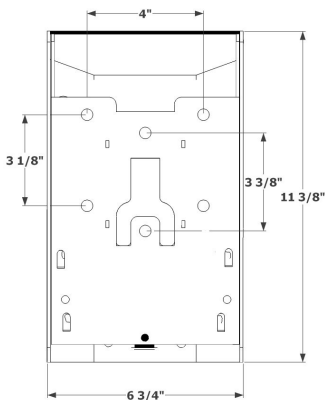
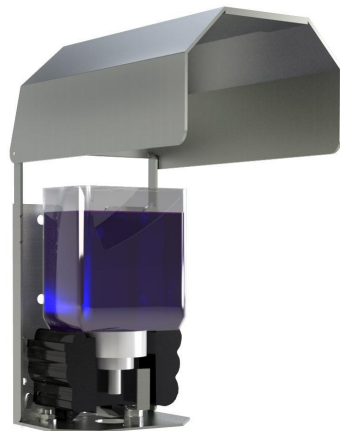
- Pre-packaged 1200ml GoJo™ TXF Foaming Soap
- Pre-packaged 1200ml GoJo™ TXF Hand Sanitizer

Installation: Secure fixture to wall with appropriate 3/8" Stainless Steel anchoring hardware for optimal installation strength (not provided). Recommend 3/4" or greater back bracing for walls. Partitions may require T-nuts or other suitable anchoring devices.

Guide Specification: Dispenser shall be constructed with American made, 12 gauge 304L or 12 gauge 316L Stainless Steel joined /w TIG welds and edges de-burred. Dispenser shall not be cross-metal contaminated during manufacturing construction. Dispenser housing shall provide protective cover for automatic foaming dispenser mechanism. Dispenser shall be locked by cylinder keylock. Dispenser shall have 3/8" mounting holes. 12 Gauge models shall include a 10 year standard or 20 year optional functional warranty against vandalism when properly installed and locked while in service. 316L SS shall be used for US Navy maritime use or if exposure to salt water is prevalent.

Warranty Key (See Website for Details):

- 12g SS: 10yr standard or 20yr optional Vandalism Warranty



Phone
(530) 894 7867

www.vandalstop.com

Vandal Stop Products by Atlas American LLC
1930 Village Center Circle #3-5871
Las Vegas, NV 89134

E-Mail
sales@vandalstop.com