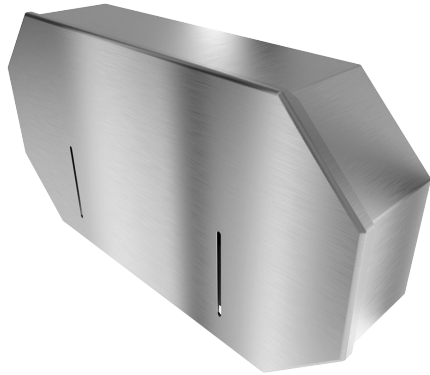




## AA-MJRD-KLx2

### Vandal Resistant Two Roll Mini Jumbo Toilet Paper Dispenser with Key Lock

**Features:**

- Vandal Resistant Design
- Made in USA
- 10 Year Vandalism Warranty on 12g
- Stops Bulk Paper Theft
- Reduces Maintenance Costs
- Universal Paper Compatibility
- Spray & Drip Deflective
- Bottom Mounted & Accessed Protected Key Cylinder Lock
- Fits Two 9" Mini Jumbo Roll
- Accommodates Multiple Paper Styles
- Surface Mounted
- Corrosion Resistant
- LEED Sustainable Materials

**Dimensions:** 20" x 10 5/8" x 4 1/8" (WxHxD)

**Weight:** 21 lbs

**Material Options:**

- 12-gauge 304L Stainless Steel
- 12-gauge 316L Stainless Steel

**Model Names:**

- AA-MJRD-KLx2-304L-12g
- AA-MJRD-KLx2-316L-12g

**Finish:** Stainless Steel Satin #4 Finish

**Capacity:**

- 2 - 5" Standard Rolls
- 2 - 5" High Density Rolls
- 2 Standard Mini-Jumbo 9" Rolls

**Compatibility:** Accepts Up to 9" diameter Mini Jumbo and Jumbo Rolls.

- [Amazon Commercial 9" Jumbo Roll Toilet Paper](#)
- [Scott Professional Mini Jumbo 9" Coreless High Capacity](#)
- [Scott Essential Coreless High Capacity](#)

**Mounting:** 3/8" Surface Mounting Hole Placements. Mounting Hardware is not included due to wide variety of mounting surfaces. Installer must select 3/8" hardware suitable for application.

**Installation:** Secure fixture to wall with appropriate 3/8" Stainless Steel anchoring hardware for optimal installation strength (not provided). Recommend 3/4" or greater back bracing for walls. Partitions may require T-nuts or other suitable anchoring devices. When possible it is recommended that units be through bolted back-to-back providing optimal installation strength.

**Guide Specification:** Dispenser shall be constructed with 12 or 16 gauge 304L or 12 gauge 316L Stainless Steel joined /w TIG welds and edges de-burred. Dispenser shall not be cross-metal contaminated during manufacturing construction. Dispenser housing shall provide protective cover for tissue paper against drip and spray. Shall be secured with keyed cylinder lock. Dispenser shall have 3/8" mounting holes. Dispenser shall accept multiple paper styles. 12 Gauge models shall include a 10 year vandalism warranty when properly installed & locked while in service. 316L SS shall be used for US Navy maritime use or if exposure to salt water is prevalent.

