

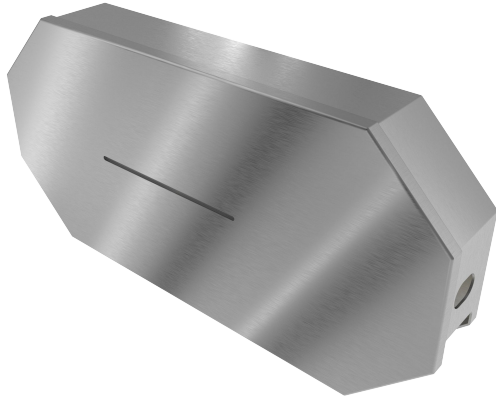


# VANDAL



## AA-JRDx2

### Vandal Resistant Double Roll Jumbo Toilet Paper Dispenser



#### Features:

- Vandal Resistant Design
- Made in USA
- 10 Year Vandalism Warranty
- Protected Padlock
- Stops Bulk Paper Theft
- Ultra High Capacity with 2X Jumbo Rolls
- Universal Paper Compatibility
- Spray & Drip Deflective
- Surface Mounted
- Corrosion Resistant
- LEED Sustainable Materials

**Dimensions:** 27  $\frac{3}{8}$ " x 13  $\frac{3}{8}$ " x 4  $\frac{1}{4}$ " (WxHxD)

**Weight:** 26 lbs - 12 gauge Stainless Steel  
22 lbs - 16 gauge Stainless Steel

#### Material Options:

- 12 gauge 304L Stainless Steel
- 16 gauge 304L Stainless Steel
- 12 gauge 316L Stainless Steel

#### Model Name:

- AA-JRDx2-304L-12g
- AA-JRDx2-304L-16g
- AA-JRDx2-316L-12g

**Finish:** Stainless Steel Satin #4 Finish

#### Capacity:

- 2 Giant Jumbo 12" Diameter Corred and Coreless Roll
- 2 Mini Jumbo 9" Diameter Corred and Coreless Roll

**Compatibility:** Accepts Up to 12" diameter Mini Jumbo and Jumbo Rolls.

- GEN 1513 12" JRT Jumbo Bath Tissue
- Tork Jumbo Toilet Paper Roll 10"
- Amazon Commercial 9" Jumbo Roll Toilet Paper

**Mounting:** 3/8" Surface Mounting Hole Placements. Mounting Hardware is not included due to wide variety of mounting surfaces. Installer must select 3/8" hardware suitable for application.

**Installation:** Secure fixture to wall with appropriate 3/8" Stainless Steel anchoring hardware for optimal installation strength (not provided). Recommend 3/4" or greater back bracing for walls. Partitions may require T-nuts or other suitable anchoring devices. When possible it is recommended that units be through bolted back-to-back providing optimal installation strength.

**Guide Specification:** Dispenser shall be constructed with 12 or 16 gauge 304L or 12 gauge 316L Stainless Steel joined w/ TIG welds and edges de-burred. Dispenser shall not be cross-metal contaminated during manufacturing construction. Dispenser housing shall provide protective cover for tissue paper against drip and spray. Shall be secured keyed via a shrouded padlock. Dispenser shall have 3/8" mounting holes. Dispenser shall accept multiple paper styles. 12 Gauge models shall include a 10 year vandalism warranty when properly installed & locked while in service. 316L SS shall be used for US Navy maritime use or if exposure to salt water is prevalent.

