

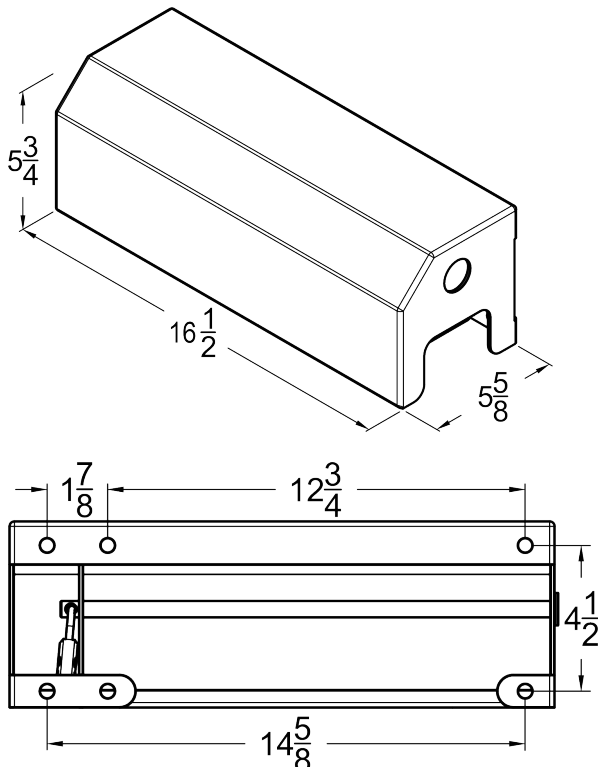
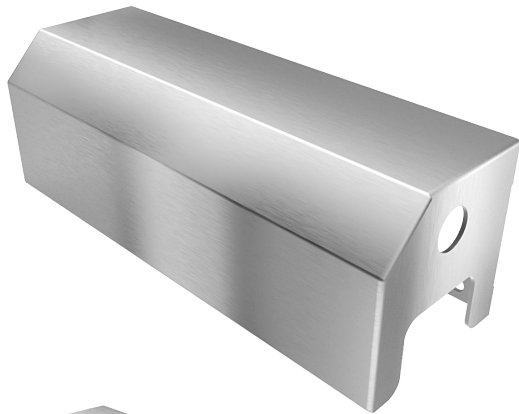


VANDAL



AA-HRTDx3E

Vandal Resistant Three Roll Commercial Toilet Paper Holder with Protected Lock



Features:

- Vandal Resistant Design
- Industrial Grade Heavy Duty
- Made in USA
- Drip Deflective
- Shroud Protected Padlock
- Surface Mounted
- Accommodates Multiple Paper Styles
- Corrosion Resistant
- Industry Leading Warranty against Vandalism

Dimensions: 16 1/2" x 5 3/4" x 5 5/8" (WxHxD)

Weight: 11 lbs - 12 gauge Stainless Steel
6.5 lbs - 16 gauge Stainless Steel

Material Options:

- 12 gauge 304L Stainless Steel
- 16 gauge 304L Stainless Steel
- 12 gauge 316L Stainless Steel

Model Names:

- AA-HRTDx3E-304L-12g
- AA-HRTDx3E-304L-16g
- AA-HRTDx3E-316L-12g

Finish: Stainless Steel Satin #4 Finish

Capacity:

- 3 Standard Core Roll Up to 5" Diameter
- 3 High Density Coreless Roll up to 5" Diameter

Compatibility: Accepts 5" diameter standard toilet paper rolls.

- Scott Professional Standard Roll - 100% Recycled
- Georgia Pacific Compact Coreless Recycled
- Scott Essential Coreless High Capacity

Mounting: 3/8" Surface Mounting Hole Placements. Mounting Hardware is not included due to wide variety of mounting surfaces. Installer must select 3/8" hardware suitable for application.

Installation: Secure fixture to wall with appropriate 3/8" Stainless Steel anchoring hardware for optimal installation strength (not provided). Recommend 3/4" or greater back bracing for walls. Partitions may require T-nuts or other suitable anchoring devices. When possible it is recommended that units be through bolted back-to-back providing optimal installation strength.

Guide Specification: Dispenser shall be constructed with 12 or 16 gauge 304L or 12 gauge 316L Stainless Steel joined w/ TIG welds and edges de-burred. Dispenser shall not be cross-metal contaminated during manufacturing construction. Dispenser housing shall provide protective cover for tissue paper against drip and spray. Protective shroud adds security for padlock. Dispenser shall have 3/8" mounting holes. Dispenser shall accept multiple paper styles. 12 Gauge models shall include a 10 year vandalism warranty when properly installed & locked while in service. 316L SS shall be used for US Navy maritime use or if exposure to salt water is prevalent.

